



Sussex Vale Transition House

Doorways of Hope

The Campaign for Second Stage Housing
for Women Fleeing Violence



Doorways of Hope

Instead of a swinging fist, a helping hand

Instead of acid-blasts of criticism,
voices of encouragement

Instead of outbursts of rage and threats,
offers of support and guidance

Instead of sabotage and opposition,
pathways to skills and opportunities

Instead of dread of what's behind the door,
wide open doorways to hope.

"I first went to Sussex Vale Transition House with my daughter when she was two. Her father had just finished beating me and when the police arrived they informed me that I could go to SVTH with my daughter. . . . I also stayed again after that because I literally had no place else to go.

Initially I didn't notice what a difference SVTH had made for me. I felt pressure from myself to find my own place, keep my world spinning without a beat, and only had a month to do it. Realistically in NB that is almost impossible.

I now see that the difference the Transition House made for me is HOPE. . . . The staff at the Transition House are awesome . . . very versatile and compassionate. They're eager to help the best way they can and knowledgeable on resources a person may need to help themselves.

My hopes for the future are to attend UNBSJ and take the Human Service Counselor course. I hope to volunteer or work at SVTH, dealing with crisis intervention, and I am determined to change the system, educate and empower those victims – and maybe re-educate those that have been mis-educated.

- Name Withheld



Futures, Free of Violence



Physical violence in the home often begins with a first pregnancy.

When a woman flees abuse, she has reached a breaking point.

The pain, suffering and risk - or worse - for her and her children have escalated to intolerable levels. She is driven, finally, to overcome her fear of reprisals, and her shame in seeking help.

The key to taking that life-saving decision is having someplace safe to go.

For almost 30 years Sussex Vale Transition House has been that place, for dozens of women a year. For those women, SVTH is literally a life saver. Many use their month at SVTH as a springboard to a better future.

But many need more support for longer periods of time. Finding housing in one month can seem almost impossible. Women also need employment, and often that requires new skills. They may need to buy a car to hold a job. And their children are always their first priority.

Making major progress towards a new life while dealing with the accumulated effects of trauma takes time.

Without more counselling, coaching, mentoring, and encouragement, they lose heart. Without new skills for employment they flounder. And without more time - including time to find a place to live- they often have no choice but to return to the abusive setting.

That's why we are opening Second Stage Housing - a five-unit apartment building geared for the women we serve and their needs.

Once open, women will not only have a safe place in a crisis, more will have a doorway to genuine hope for a better future.



N.B. has the highest rate of police-reported IPV victims in the Atlantic Provinces



More people are killed by their partners in N.B. than in other Atlantic Provinces



More family related murder-suicides happen in N.B. than anywhere else in Canada



TWO-THIRDS of all N.B. women killed were living with the accused



70% OF THE DEATHS occurred in small towns and rural areas

https://www2.gnb.ca/content/dam/gnb/Departments/ps-sp/pdf/Safety_Protection/GNB_LoveShouldntHurt_THENUMBERS.pdf

Sussex Vale Transition House

Three decades of providing a safe haven for women and children.

Incorporated in 1991, the Sussex Vale Transition House provides safe shelter and support for women and their children who have left their homes to escape abuse. More than 1,700 women and children have benefited from the caring support of our trained Crisis Intervention staff.

We provide the support services a woman needs to leave an abusive living environment.

- Provide accommodation for up to 30 days.
- 24/7 service with trained staff
- 365 days a year
- We work with women to develop an Action Plan for them and one for their children, as well as a Safety Plan.
- We connect women with existing social, health, educational and recreational services.



! Possessiveness, jealousy, and control start early in a relationship but are often trivialized, ignored or even seen as proof of how much the other person “loves” us. Threats and intimidations come later, after we have become committed to the relationship.

A vital service to women in crisis

I have known two women who have used the services of Sussex Vale Transition House. In both cases it was critical in getting them out of very dangerous situations. For at least one of the women, the Transition House services were potentially lifesaving. Unfortunately, I know others who could or should be turning to SVTH – this is a vital service to offer to women in a crisis. When I learned of the proposal to add second stage housing to what Sussex Vale Transition House does, I absolutely could see the value of it. I am happy to support them in their work and in this new project.

-Sylvia MacVey

An abusive relationship is one where generally one partner systematically exerts power over another partner using tactics to control and harm the victim.

We support women dealing with all forms of abuse listed below:

- **Emotional abuse** - insults, criticism, blame and demeaning comments that keeps people feeling insecure and trapped
- **Intimidation, stalking, threats and physical violence** - instilling fear to control and subjugate another person
- **Sexual abuse** - using sex as a weapon to punish, control, embarrass or shame another person
- **Psychological abuse** - undermining a woman's sense of reality
- **Financial abuse** - control access to all of the victim's resources, such as time, transportation, food, clothing, shelter, insurance, and money
- **Spiritual abuse** - denying and dismantling relationships with her religious community, or forbidding personal religious practices
- **Cultural abuse** - using cultural differences as an excuse for abuse, or forcing her to abandon her own practices and adopt theirs

Doorways of Hope



Most women who seek refuge at SVTH cannot afford independent housing and have few resources.

That one fact is often enough to drive many women back to the setting they fled, back to a situation where either nothing has changed, or where the abuse intensifies as punishment for leaving.

We are compelled to break that cycle for more women. We will offer new doorways to hope in the form of longer-term housing.

SVTH receives and appreciates the tremendous support from the community. That assistance comes through volunteers, through gifts of cash and goods, and especially through the community's engagement in the weekly Gold Rush draw that helps fund our day-to-day operations.

With such support we are a stable, sustainable organization. And once we build it, we can also operate the Second Stage Housing the area urgently needs. But we need help with the costs of construction.

That's why we are quietly asking leading members of the community to help us create these new doorways of hope for women and children seeking lives free from violence.



"It is estimated that women with disabilities are 1.5 to 10 times as likely to be abused as nondisabled women, depending on whether they live in the community or in institutions. It is extremely difficult for any abused woman to leave a situation of abuse. For a woman with a disability, this situation is even more difficult."

- Public Health Agency of Canada

(<http://www.phac-aspc.gc.ca/ncfv-cnivf/publications/femdisab-eng.php>)

"What if it were me?"

I cannot imagine what it must be like to be afraid to go home because of the violence you face. I'm extremely lucky that I don't have that experience. But many do. And we'd be surprised at who they are - it could be a coworker, the person who served you lunch, or a neighbor. If we put ourselves in their shoes, we will want them to have a safe place to go.

SVTH is a huge asset to the area. Its staff give much more to help clients than they have to, because they ask themselves "What if it were me?" Funding SVTH and the new Second Stage Housing is really important, for the women who need a safe place, and for our community. I urge everyone to join in support.

- Mila Maxwell



Second Stage Housing

by Sussex Vale
Transition House

When they find a safe place to live, even women who have lived in abusive settings for many years demonstrate remarkable strength and determination to build a better life.

In our new housing project, they will draw on a natural community of encouragement, and formal support, such as counselling, skills building and education, and have regular access to medical care. Free of the constant opposition, sabotage, anger and violence they have known, many will have their first opportunity to make a better life for themselves and their children.

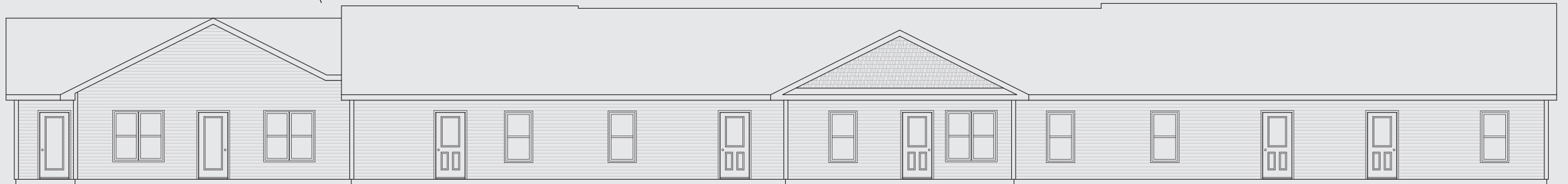


Five units of housing

- 1 one-bedroom
- 2 two-bedroom units
- 2 three-bedroom apartments

Location and Security

- This location is near many local amenities, including pharmacies, and medical services (hospital, community clinic, dentist office, school bus stop).
- For security, building is located in an area with foot and road traffic.
- The budget includes a security system including exterior camera surveillance, locked entrances on a remote release system, intercoms and panic buttons.
- The building will not be identified externally as anything more than apartments and offices.



Standards

- All units are accessible, meeting national building code for accessibility standards
- Construction will follow the "Green Building Policy" provided by the Government of New Brunswick.

Building will also include

- office
- group/child therapy rooms
- common space/ meeting space for support groups and to facilitate expanded programming in partnership with the Sussex Committee for the Prevention of Family Violence

Second Stage Housing Budget

Sussex Vale Transition House has a strong track record of solid financial management and prudent administration.

- We own our current property outright, and our program enjoys solid support year over year.
- The one-acre property for the new building is being donated to us by a local business owner.
- We have accumulated more than a third of the total capital cost of Second Stage Housing, on deposit and reserved for the new project.
- We are applying for grants from foundations, as well as approaching various companies and corporations with an interest in the safety, well-being and future of women and children in our area.
- We are not making a broad appeal to the community, which already strongly supports SVTH through the weekly Gold Rush draw. Diverting any existing support from our current work with women and children would be counterproductive to all that we do.

With the assistance of this quiet fundraising campaign, our goal is for \$600,000 in unusual one-time donations and pledges, so that the new housing operates mortgage free.

Staying debt free ensures maximum flexibility in services and programming and further enhances the stability of SVTH and the new second stage housing.

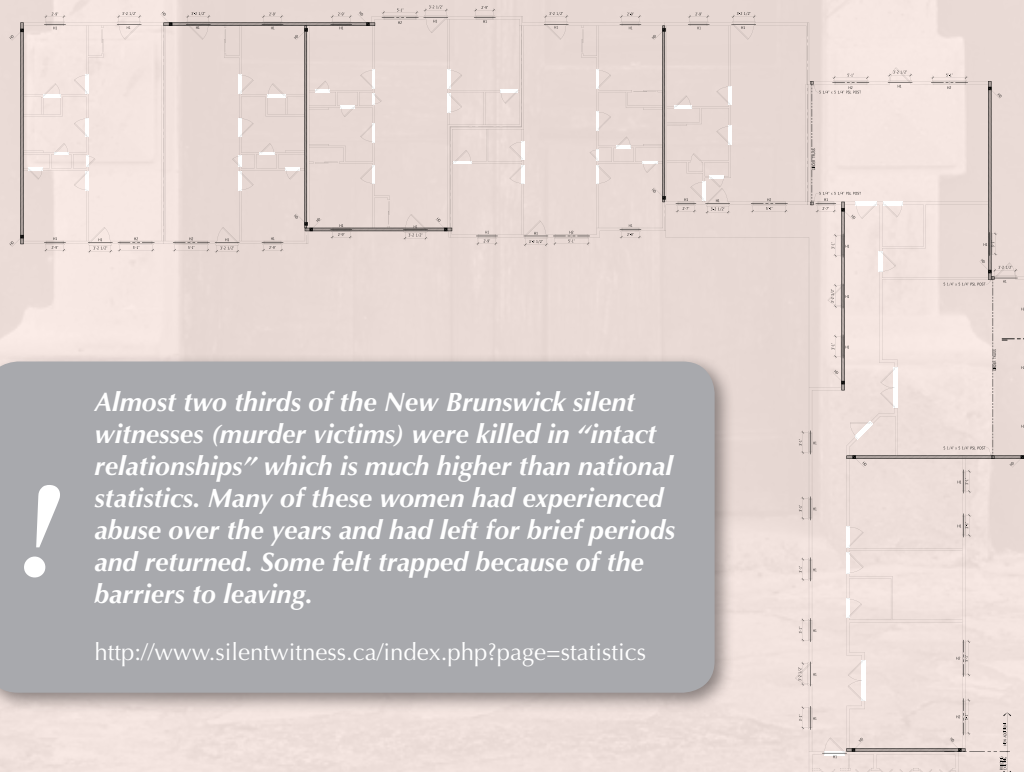


Capital Costs

Land (donated)	\$0
Construction, outfitting, landscaping, contingencies, etc.	\$1,148,485
Other fees and costs	\$ 119,924
Total capital cost - 5 units of accessible housing plus program space	\$1,268,409
Initial occupancy and operating costs during launch	\$79,000
Total costs - construction, outfitting and launch	\$1,347,409

Revenue

FCS Capital Grant Contribution (Province of NB)	\$200,000
Cash on hand reserved by SVTH for project	\$500,000
HST return	\$44,671
Canada Mortgage and Housing Corporation Seed money	\$19,300
Total capital available	763,971
Requested from members of the community	\$583,438





Imagine the day-to-day life of a woman who fears for herself or her children. Or is cut off from friends or family. Or constantly manipulated and controlled with criticism, psychological; attacks and threats of violence or death.

For almost 30 years, SVTH has been a way out in the Sussex area. We are proud of our work and our track record. We applaud our staff for their commitment and services, and honour our community partners.

We are often amazed at what women who come to us have endured, and even more at their will to work and build better lives for them and their children. Yet many women do not finally escape, because they have nowhere to go.

So we decided to create five units of "second stage housing," i.e. a place to go after the first stage of the crisis has passed. Now many more will have a much better opportunity.

Please join us in making possible these new Doorways of Hope.

- Julie Matthews, Executive Director
- Jane Keith, Treasurer and Chair, Doorways of Hope

Sussex Vale Transition House Leadership Team

Executive Director Julie Matthews

Members of the Board

President	Scott Wiggins	Director	Tammy Boudreau
Vice President	Diane Tait	Director	Stephanie Chaisson
Treasurer	Pat Bell	Director	Kendra Gilmore
Secretary	Sylvia MacVey	Director	Jane Keith
		Director	Cindy McQuinn

Your support will help women:

- rebuild their lives
- heal from abuse
- develop resiliency
- move towards living violence-free lives

How to give to Doorways of Hope

Every gift to SVTH for Doorways of Hope will support women and children as they escape violence in their homes, and build new lives free of fear and abuse.

Each gift will be gratefully received, recorded and recognized in an appropriate manner. You have several options for making your gift. All gifts will receive tax credit to the full extent allowed by law.

Gifts of cash

Cash gifts provide immediate resources to Sussex Vale Transition House and advance the timetable for opening Second Stage housing.

Gifts by pledge

With a pledge period of up to three years, you are able to budget for your donation, while the SVTH can begin moving forward on a timetable to open the new housing.

Gifts of securities or personal property

Gifts in this form may be advantageous to certain donors. Inquire with Julie Matthews, Executive Director or Jane Keith, Chair of Doorways of Hope for more information. (Please obtain independent financial advice about the tax or other specific implications of such a donation. SVTH does not give financial or legal advice.)

Cheques or financial directives should be directed to Sussex Vale Transition House and designated for "Doorways of Hope" or "Second Stage Housing."

SVTH is a registered charity and gifts are eligible for a charitable donation tax receipt. Charity Number - 119206894 RT0001

Vision:

We support women and their children by offering safety, compassion, resources and advocacy as they transition forward from domestic violence.

Mission:

We are a non-profit safe long-term housing option dedicated to empowering woman and their children as they transition out of violence. Through community connections, individualized support and safe housing we create opportunities for families to gain independence and re-join the community on their own terms.



Sussex Vale Transition House

P.O. Box 4862
Sussex, NB E4E 5L9

(506) 433-1649 office
(506) 432-6648 fax

second.stage@sussexvaletransitionhouse.com

www.sussexvaletransitionhouse.com